

PROFILE OF LCWS

Updated on October 2021



लुथरन सामुदायिक कल्याण समाज (LCWS)

रंगेली नगरपालिका-२, लक्ष्मीपुर, मोरङ

Email: lcwsmorang2@gmail.com Website: www.lcwsnepal.org

Lutheran Community Welfare Society (LCWS)

Rangeli Municipality-2, Morang

1. Introduction:

LCWS was established in activeness of pastors and leaders of Nepal Evangelical Lutheran Church, Morang on 10 Feb, 2010. LCWS is non profitable and social welfare based non-governmental organization. Despite of challenges to make positive effect of non-government organization to public people and sensitization of need to address empowering political, financial, social and cultural issues of marginalized community; LCWS has been working among Santhal & Musahar communities.

Santhal are from tribal community and mostly they live in Morang and Jhapa districts of Nepal. They have their own language and culture. Population of Santhal in Nepal is 51,735 according to census record-2068 BS. Musahar are from dalit community and most of they live in east and mid-western Terai region of Nepal. They haven't own language but they have some own cultural practice. Population of Musahar in Nepal are around 2,34,490 according to census record 2068 BS.

There are some common issues of Santhal and Musahar communities; mostly Santhal and Musahar community are landless and illiterate (comparatively Musahar are more illiterate. School dropout rate of Santhal/Musahar children are higher than others. They are blind faith people, they believe in cultural and traditional mythology. Most of them are unskilled labor working in farm and construction work. Community members are unaware about indigenous and dalit rights. In fact, they are separated from main development streamline of country. For livelihood options, they involved in daily wages work and some youths have gone to abroad for work. Santhal and Musahar people are from ultra-poor and marginalized community. So, to address the issues of poor and marginalized people LCWS has been working among Santhal & Musahar communities since 2010 in Jhapa & Morang districts of Nepal.

Vision:

People rejoicing peaceful and dignified life with solidarity through God's grace.

Mission:

Inspired by God's love to demonstrate humanity; establish social harmony; be advocate on behalf of marginalized and work with committed people to bring transformation in the life of poor and oppressed.

Goal:

Organizational goal

Establish equal human dignity by peace promotion

Operative goal

Partnership with marginalized communities, particularly focusing on Santhal and Musahar through socio-economic empowerment and justice peace.

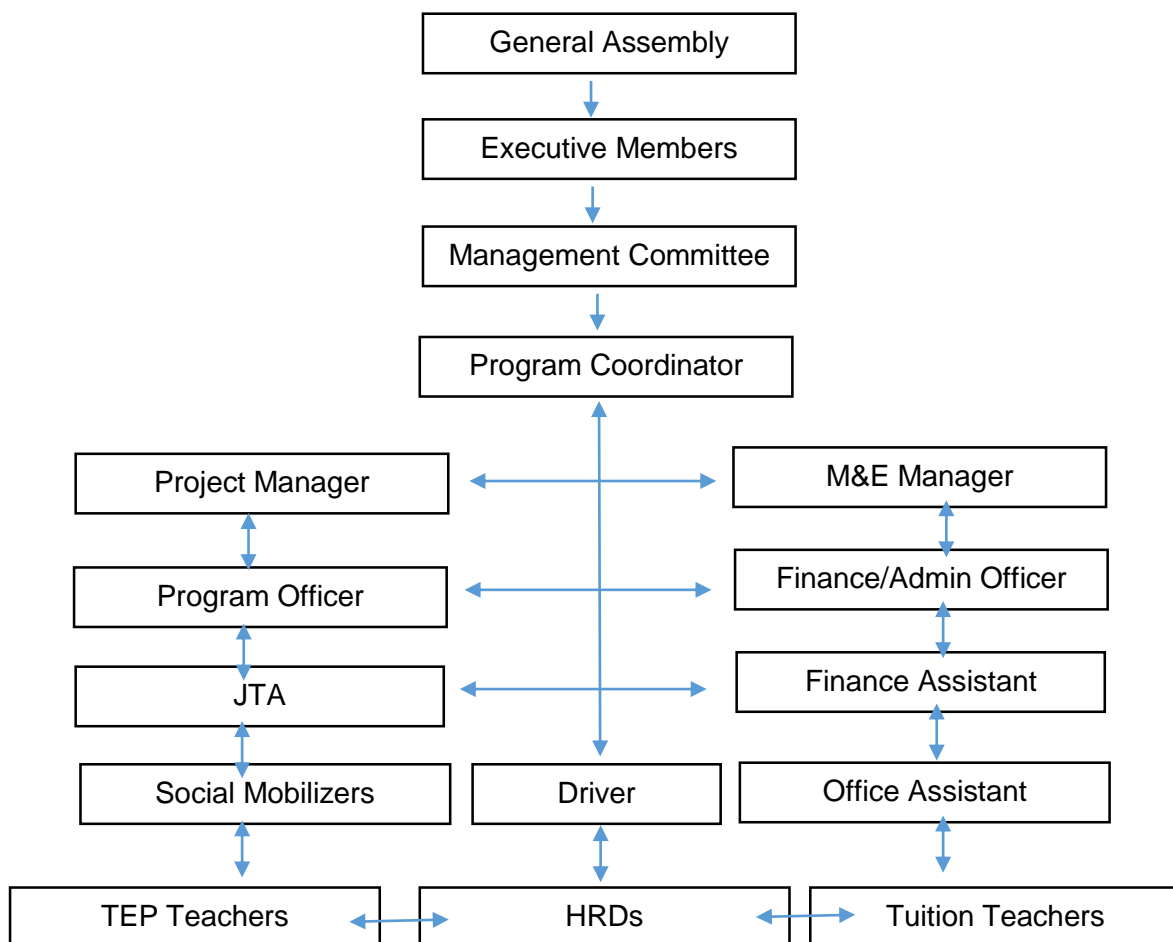
Core Values of the organization;

- ❖ We stand for humanity,
- ❖ We promote justice peace,
- ❖ We believe in transparency,
- ❖ We demonstrate accountability,
- ❖ We believe in God's grace.

2. Legal Status:

SN	Registered Agency	Date	Registration No.
1.	District Administrative Office (DAO), Morang	Feb-23, 2010 Renewed on: January-31, 2017	2367 PAN No.: 303986274
2.	Social Welfare Council (SWC)	March-4, 2010	29317
3.	Recent Audit carried out	11 August 2020	-
4.	Recent general assembly concluded	20 August 2020	-

3. Organization's Internal Management:



4. Other Affiliation:

- District Administrative Office (DAO), Morang
- Social Welfare Council (SWC)
- Nepal Evangelical Lutheran Church (NELC)
- Lutheran World Federation (LWF-Nepal)
- District Disaster Risk Committee (DDRC), Morang
- Local (RM/UM Level) Disaster Risk Management Committees

5. Areas of Working:

- Disaster risk reduction and preparedness response
- Sustainable livelihood
- Awareness on WASH promotion
- Organizational development and empowerment of poor and oppressed communities
- Good governance and social accountability

6. Working Approach:

Considering the management complexity of people organization and its wider representation from districts and VDCs, Lutheran Community welfare society have discussed and initiated to formulate project management committee (PMC) under all to bridge the gap between community and program as well as effective decision, management and communication.



LCWS will be coordinated with the governmental and non-government organization to implement the project activities effectively. The project activities after being approved will be submitted to respective DDC Morang. Other government officials in the districts will be shared before program implementation. The project staffs will be trained as and when required to enhance their capacity and knowledge so that they can improve their efficiency and effectiveness in project implementation. Sharing the information, effective communication, empowerment, mobilization, creating pressure, critical engagement with the government, regular monitoring are the implementing strategies. Additional to this, following operational approaches will be adopted to achieve program objectives, expected results, outputs and outcomes.

- **Rights-based empowerment approach:** LCWS will continue working with rights-based empowerment approach as a process that builds capacity and competence of poor and marginalized individuals, family, groups and community. Rights-based empowerment process will aim at achieving results for themselves. The approach will focus to equip poor and marginalized people and local groups with the knowledge, skills and attitudes that broaden their options, their confidence can be built up and they can be empowered to have control over their lives.
- **Inclusion and participation:** Meaningful inclusion of all community people of working areas will be ensured at all level. Serious attempts will be made to include a minimum 50 percent women's participation in organizational structure of community. Proportionate representation of all other excluded groups in the community will be ensured at all level.

- **Institutional strengthening:** LCWS will widen its effort to strengthen people's organizations and their networks. It is expected that the competent institutions at the local level will be instrumental in sustaining development initiatives.
- **Collaboration with government and other agencies:** LCWS emphasizes in promoting and strengthening the collaboration and coordination with government and other agencies working in the VDCs and the district. Hence, LCWS will make sure that there is better collaboration with local bodies to execute the programs in close coordination with VDCs and DDCs in developing periodic plans and advocate all stakeholders to support the VDC periodic plan.
- **Knowledge management:** Recognizing the importance of knowledge in upgrading institutional competence, LCWS and its partner will develop a pragmatic mechanism to manage institutional knowledge. This knowledge management mechanism will include collection of data, synthesizing into information and then translating this information into knowledge, which is a combination of strategies, approaches, practices and methods for further use in future. The foundation of this knowledge is people so this mechanism will ensure to embed people's knowledge and skills in overall operation of LCWS activities. Likely, overall project evaluation will be carried out to measure the major progress of the program against the agreed log frame. The key outcomes and achievement will be collected systematically and documented and share with concern agency. An evaluation of the project has been accomplished and the recommendation of the evaluation will be incorporated in future plan of action.

7. Partnership and Coordination:

Main Donors/Partners: LCWS has been running project in financial and technical support of LWF-Nepal as a partner NGO of LWF-Nepal. For the projects donor organizations are ALWS and ELCA.

The Lutheran World Federation Nepal (LWF-Nepal)	 <p>THE LUTHERAN WORLD FEDERATION</p>
Australian Lutheran World Service (ALWS)	 <p>Australian Lutheran World Service</p>
Evangelical Lutheran Church in America (ELCA)	 <p>EVANGELICAL LUTHERAN CHURCH IN AMERICA</p>

Canadian Lutheran World Relief (CLWR)	 Canadian Lutheran World Relief
Finnish Evangelical Lutheran Mission (FELM)	
Australian Aid	
ACT Alliance	

Coordination: LCWS always gives priority in local level networking with existing and relevant line agencies and organization during implementation of program for better of impact in community of program working areas at district level.

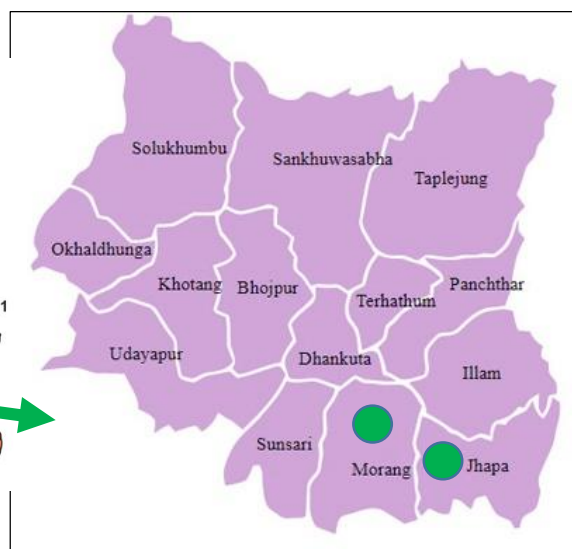
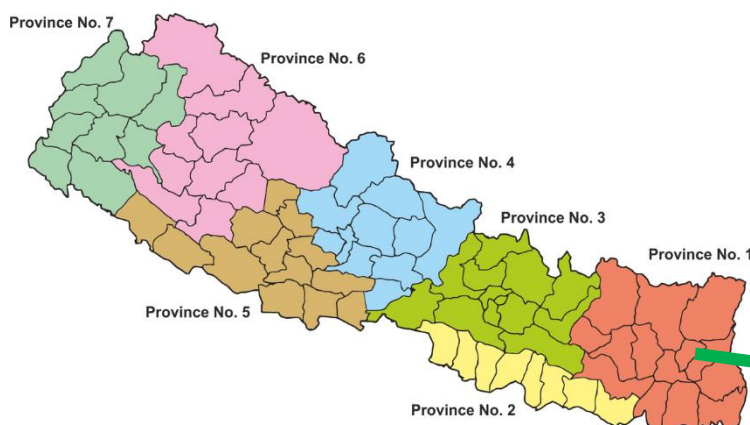
SN.	Name of org./agencies
1	Water Induced Disaster Risk Reduction Committee (जल उत्पन्न प्रकोप विभाग)
2	District Coordination Committee (DCC)
3	Local Municipality and Rural Development Committee
4	District Agriculture Development Committee (DADO)
5	Red Cross Society
6	Local Health Post
7	Local Agriculture Service Center/Livestock Service Center
8	CBR-Biratnagar
9	CSRC-Kathmandu
10	Social Network for Justice and Development (SNJD)
11	Local cooperatives and women groups
12	District Disaster Risk Reduction Committee (DDRC)
13	RMs/UMs
14	CAHURAST Nepal

8. Projects and Coverage Areas:

SN	Project/Programs	Period (From-To)	Funding Sources	Total Budget (Rs.)	Coverage Area	
					District	Municipality/ Rural Municipality
1	Capacity Building and Empowerment of Santhal Community (NDP)	2011-2013	LWF, ALWS	5908339	Morang	Jahada RM, Rangeli M, Kanepokhari RM
2	Empowerment and capacity building of Santhal and Musahar Community (NDP)	2014-2016	LWF Nepal, ALWS	8338965	Morang	Jahada RM, Rangeli M, Kanepokhari RM
3	Strengthening People's Action for Food and Livelihood Security (SPAFLS)	2015-2017	LWF, ELCA	23173242	Morang	Sunbarshi M, Rangeli M, Dhanpalthan RM
					Jhapa	Shivasatakshi M, Kamal RM
4	Nepal Flood Recovery Project (NFRP)	2017-2018	ELCA, FELM, CLWR, Primates, LWF	15798940	Morang	Sunbarshi M, Rangeli M, Dhanpalthan RM
					Jhapa	Kamal RM, Sivasatakshi M
5	Empowerment and capacity building of Santhal and Musahar Community (NDP)	2017-2019	LWF Nepal, ALWS	13053002	Morang	Jahada RM, Rangeli M, Kanepokhari RM
6	Improving the resilience of rural livelihood options for Santhal and Musahar communities in Nepal (SABAL)	2018-2020	ELCA, LWF Nepal	17160521	Morang	Sunbarshi M, Rangeli M, Dhanpalthan RM
					Jhapa	Shivasatakshi M, Kamal RM
7	Voice for Rights (L2G) Project	2019-ongoing	FELM, LWF Nepal	2193044	Morang	Sunbarshi M, Kanepokhari RM, Rangeli M, Dhanpalthan RM, Jahada RM
8	Churches and Emergencies (C&E) Project	2020 ongoing	ELCA, LWF Nepal	11864429	Morang	Dhanpalthan RM, Jahada RM
9	Local Initiative for Community Empowerment and Development (LICED)	2020-ongoing	ALWS, LWF Nepal	14550705	Morang	Jahada RM, Rangeli M, Kanepokhari RM
10	Nepal Youth Empowerment Program (NYEP)	2020-till now	LWF-DTMJ	6885888	Morang	Biratnagar, Morang
11	Actions to Ensure Entitlements to the Rishidev and Santhal Communities in Nepal - SABAL-II Project	2021-ongling	ELCA, LWF Nepal	5203964	Morang	Rangeli M, Dhanpalthan RM, Sunbarshi M
					Jhapa	Kamal RM, Shivsatakshi M

12	DEFAT COVID-19 Emergency Response for Nepal (Economic Recovery) Project	2021-ongoing	Australian Aid, LWF Nepal	4966000	Morang	Kanepokhari RM, Rangeli M, Jahada RM
13	DEFAT COVID-19 Emergency Response for Nepal (Health Security) Project	2021-ongoing	Australian Aid, LWF Nepal	7614300	Morang	Kanepokhari RM, Rangeli M, Jahada RM
14	ACT Alliance Global Response to the Covid-19 Pandemic Project	2021-ongoing	Act Alliance, LWF Nepal	5809000	Morang	Sunbarshi M, Dhanpalthan RM

Working Areas



Morang-

Rangeli Municipality,
Dhanpalthan Rural Municipality,
Kanepokhari Rural Municipality,
Jahada Rural Municipality, and
Sunbarshi Municipality

Jhapa-

Shivsatakshi Municipality
Kamal Rural Municipality

LCWS has been working in Morang and Jhapa districts of province-1 of Nepal, since its establishment. However, in constitution of LCWS, it is clearly mentioned that LCWS can extend working areas in other provinces too as per the needs and availability of resources following the law and policies of the Government of Nepal.

9. Organizational Policy & Guidelines:

LCWS have developed documents of policies as mentioned below:

- Organizational Constitution
- Admin & Finance Policy
- Vehicle Policy
- Organizational Code of Conduct

- Child Protection Policy
- Gender Equity & Social Inclusion (GESI) policy
- HRD manual
- Project Operation Guidelines (POG)
- Activity Description Guideline (ADG)
- CRM Policy

10. Current Staffing Strength:

SN	Current Staffing Level	Project	Total Strength		
			M	F	Total
1.	Program Coordinator	LICED, SABAL-II, L2G, C&E	1	0	1
2.	PMED Manager	LICED, SABAL-II, L2G, C&E	1	0	1
3.	Project Manager	NYEP	1	0	1
4.	Finance & Admin Officer	LICED, SABAL-II, L2G, C&E	1	0	1
5	Program Officer	SABAL II, C&E, LICED, DFAT & Act Funded Covid-19 Response Project	4	0	4
6.	Account Assistant	C&E, NYEP	1	1	2
7.	JTA	SAABL II, LICED	1	0	1
8.	Social Mobilizer	LICED, SABAL-II, L2G	3	5	8
9.	Enterprise Development Assistant	LICED, SABAL-II, DFAT & Act Funded Covid-19 Response Project	0	1	1
10.	Database Management Assistant	DFAT & Act Funded Covid-19 Response Project	0	1	1
11.	Driver		1	0	1
12.	Office Helper		1	1	2
Total:			15	9	23

11. Direct Beneficiaries:



112 Groups, 1844 HHs,
8196 family members
(m-3934, f-4262)



7 Cooperatives, 2150
Cooperative Members,
NRs. 70,50,400 Capital



31 DMTs, 657
HHs Covered,
12 grain banks,

4 RM/UM
level DPOs,
more than
1500 DPO

4 District level
Santhal/
Musahar
organization



10 Vegetable
pocket areas in
Jhapa and Morang

12. Major Achievements (Highlights of 2020 Interventions):



Major Achievements:

Outcome 1: Sustainable Livelihoods

- 186 individual community members (m-80, f-106) have been involving in various agricultural enterprises in 1390 kattha of land and increased in their yield as well quality of products. (SRI Paddy Farming-60HHs, Maize Farming-77HHs)
- 86 HHs from community have been doing lease hold farming in their initiatives, out of 10 HHs have been directly supported through the project. Through which they get sufficient food all year round for their families.
- 84 individuals including male-43 and female-41 have acquired relevant skills through involving in various leadership and entrepreneurship trainings provided by different institutions.
- 89 HHs have been making annul income more than NRs. 60,000/- through livestock farming i.e. pig rearing farming and fish farming and establishment of enterprises on various title.










Major Achievements:

Outcome 2: Quality Services

- 680 families (M-296, F-384) have improved access to WASH facilities,
- 2 PWD, child, girl friendly school toilet constructions/repairmen's have been accomplished,
- Tuition centers are functional at 7 locations in Jhapa and Morang, where 142 children (b-67, g-75) of basic school level have been directly involving.
- 672 community members including male-287, female-385 have received food assistance during country lockdown period due to Covid-19 pandemic. LCWS has distributed relief support of food items,
- 77 labors trapped due to lockdown at Morang, who were from far districts of Nepal. Similarly 95HHs have been provided support of food items as relief to response the risk of food scarcity in community level.
- 33 HHs of Jahada rural municipality-Morang have provided support of improved cooking stove in coordination with local government- Jahada Rural Municipality.



Major Achievements:

Outcome 3: Protection and Social Cohesion

- 35 HHs including male-3 and female-32 have been provided partial support for their shelter construction of Kanepokhari RM, Rangeli Municipality and Jahada Rural Municipality. They were provided 2 bundle of CGI sheets per HHs for completion of shelter construction.
- 24 PwD people (M-16, F-8) of Rageli municipality area have been supported technically to received ID card from the respective government alliance to ensure their PwD rights and allowances.
- Organizing 13 campaign on various issues/day celebrations to raise awareness level of community people to claim their rights, Increasing number of school enrollment Santhal/ Musahar students, tuition centers for Santhal/Musahar children have been running.
- 10 no. of cases on HR violation raised and registered,
- 481 Santhal and Musahar peoples (m-186, f-295) enjoying with the social security allowance provisioned to them at local level





Major Achievements:

Outcome 4: Systems and Practices for Quality Programming

- LCWS has developed key policies and guidelines to ensure effective implementation of programs and maintain world standard quality of project management (financial policy, code of conduct, child protection policy, vehicle policy, GESI policy, POG/ADG, HRD guidelines, strategic plan etc..),
- Functional learning and sharing environment within and outside LWF Nepal that includes training, exposures and sharing, functional complaint response mechanism from community level to national level.
- Online trainings/ zoom meetings and participation in webinars.
- Strengthening institutional and leadership capacities of 4 district level Santhal/Musahar organizations along with their 5 year strategic advocacy plan,
- Capacity building of 3 municipality/RM level DPOs, Santhal/Musahar organizations, 110 groups, 26 DMTs, 6 cooperatives for their access on public services and resources, as well as to advocate their rights from local level to national level,



COVID-19 Response

1. Awareness on Covid-19

- Distribution of flex and IEC materials
- Broadcasting of Radio Program (for 45 days)



2. Relief Support Distribution

- Support to 77 labors trapped due to country lockdown,
- Food items to 95 HHs (Rice-20kg, Pulse-2kg, Oil-1 ltr, Salt-1kg, Soap-1 piece)
- Rice Flakes (Chira) distribution to 300 HHs,



3. Distribution of Covid-19 preventive materials,

- 2 piece of soaps to each 2400 HHs of of Jhapa and Morang,
- 1000 piece of masks to Muslim community,

4. Medical items support to Province level government

- Helious UPS for covid-19,
- Medical item support for covid-19 hospital: 1 X-ray machine, 2 electric suction machines, 1 oxygen making machine, 30 personal safety equipment (PPE) sets, 4 IR thermometers, 120 N95 masks and 500 surgical masks.





COVID-19 Response

5. Medical items support to local government:

Covid-19 Response, Medical Items Support to Local Government						
S.N	RM/UM	PPE (Chinse)	Mask	Gloves	Sanitizer	Lifebuy Soap
1	Jahada RM	2 set	500 set	100 set	5 ltr	200 packet
2	Dhanpalthan RM	2 set	500 set	100 set	5 ltr	
3	Rangeli UM	4 set	1000 set	100 set	5 ltr	300 packet
4	Sunbarsi UM	2 set	500 set	100 set	5 ltr	
5	Kanepokhari RM	2 set	500 set	100 set	5 ltr	
Toral:		12 Set	3000 Set	500 Set	25 Ltr	500 Packet



Major Achievements

L2G Project 2020

- Capacity building of target groups/ network/ CSOs working on priority right issues to produce evidence from grass root level,
- Collection and consolidation of evidence: 855 HH survey data has been collected through ESCR mobile application and uploaded in the KOBO Collect server. Apart of this, 16 genuin cases from Santhal communities have been collected and well documented.
- Conduction of events for UPB process from local to national to international level to advocate issues of marginalized groups (santhal/dalit etc).
- Dialogue with local/ province/ federal duty bearers: to submit the memorandums to local level government to address the issues of santhal communities.
- Collaboration and coordination with like minded organizations to prepare the ESCR report.



13. Our Contact:

Lutheran Community Welfare Society (LCWS)

Office Address: Rangeli Municipality-2, Laxmipur, Morang, Nepal

Branch Office: -Kamal Rural Municipality-6, Gohabari, Jhapa, Nepal

Contact Person: Mr. Joel Soren (Program Coordinator)

Cell Phone: +977-9842045526, +977-9815366644

Toll Free No. LCWS for Koshi Covid-19 Hospital Biratnagar: +977-9801571036

E-mail: lcwsmorang2@gmail.com

Website: www.lcwsnepal.org

सम्झदार तथा सहयोगी संस्थाहरू:



**Australian
Aid**



**Australian
Lutheran
World Service**



actalliance



**THE
LUTHERAN
WORLD
FEDERATION**



लुथरन सामुदायिक कल्याण समाजको मूल्य मान्यताहरू:

हामी मानवताको पक्षमा उभिन्छौं,
हामी न्यायलाई बढावा दिन्छौं,
हामी पारदर्शितामा विश्वास विश्वास गर्छौं,
हामी जवाफदेही छौं,
हामी इश्वरको कृपामा विश्वास राख्छौं ।



आपतकालिन प्रतिकार्यका लागि विपद व्यवस्थापन समितिका कार्यदलहरूलाई प्रदान गरिएको खोज तथा उद्धार तालिमको एक भ्रमण ।



**Lutheran Community
welfare society(LCWS)
2066**

Lutheran Community Welfare Society (LCWS)

Central Office: Rangeli Municipality-2, Laxmipur, Morang

Contact: 98420045726, 9819012825, 9815366644

Email: lcwsmorang2@gmail.com

Website: www.lcwsnepal.org

Branch Office: Kamal Rural Municipality-6, Gohabari, Jhapa